

# Suite 440

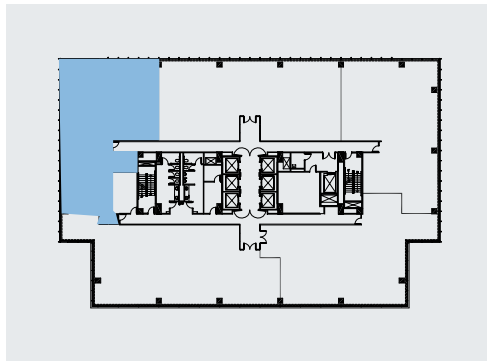
3,903 RSF

# 201

SEVENTEENTH

 201 17th Street NW, Atlanta, GA 30363

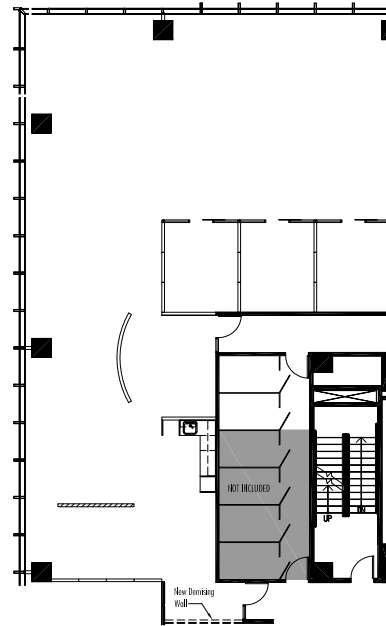
[WWW.201SEVENTEENTH.COM](http://WWW.201SEVENTEENTH.COM)



FLOOR **4TH**

SUITE **440**

SQ FT **3,903 RSF**



Suite 440 features a mostly open floor plan with exposed ceiling plenum. This suite has moveable partition and raised floors ensuring ultimate flexibility within the suite for future growth. Contiguous availability up to 21,681 RSF on same floor.



FOR LEASING INFORMATION, PLEASE CONTACT:

Jeff Keppen  
(404) 504-7923  
[jeff.keppen@cbre.com](mailto:jeff.keppen@cbre.com)

Nicole Goldsmith  
(404) 923-1254  
[nicole.goldsmith@cbre.com](mailto:nicole.goldsmith@cbre.com)

Proudly Leased and Managed by:

**CBRE**

a **KBS** property